



Boston Public Library: Housing With Public Assets Strategy

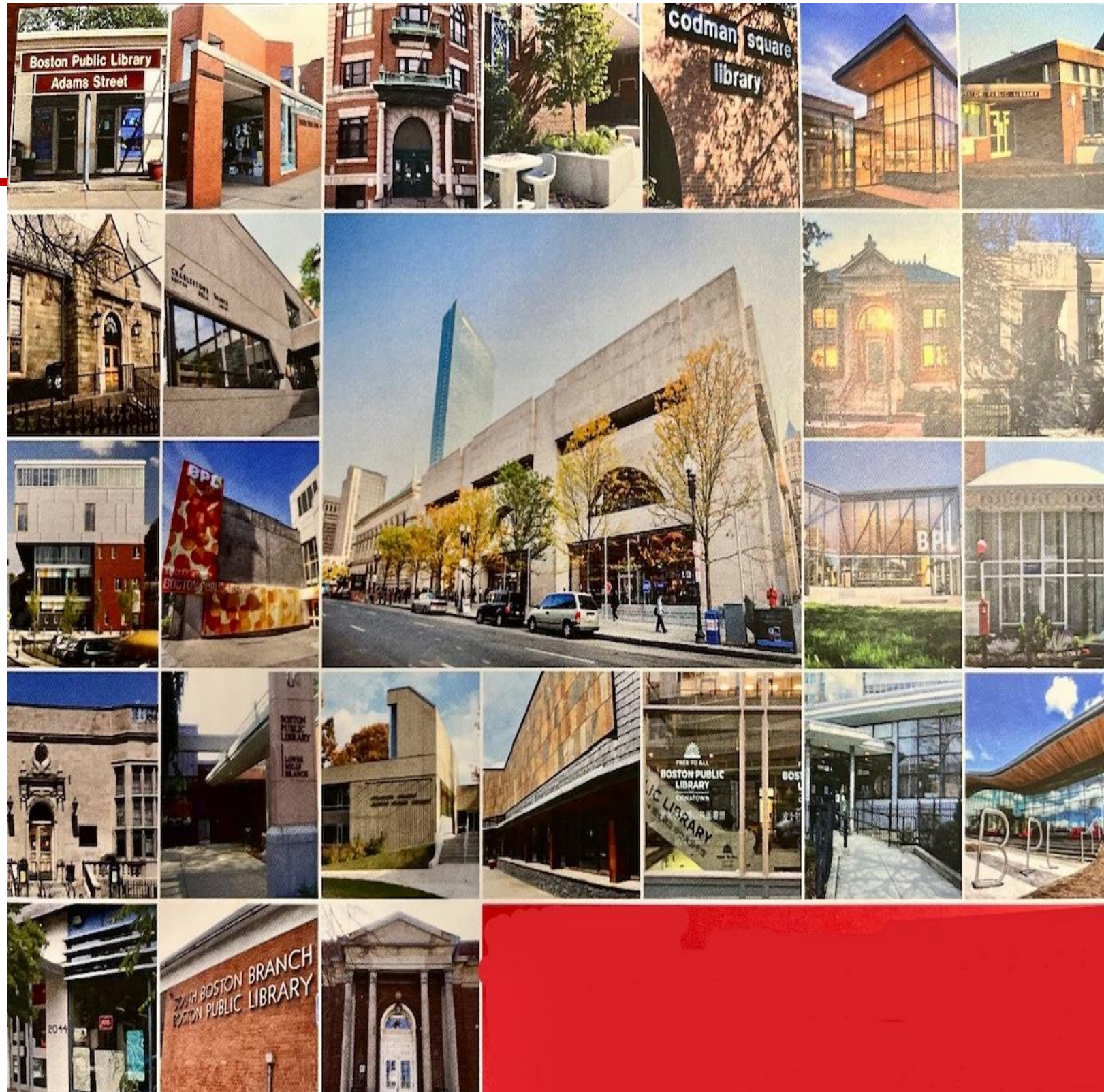
RENOVATING BRANCHES / HOUSING NEEDS – A PROGRAM IN DEVELOPMENT

David Leonard

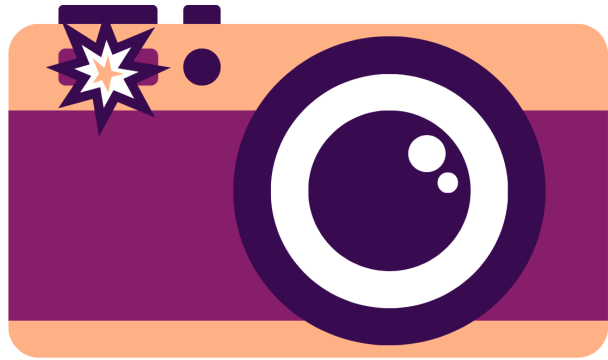
President

BRANCHES

- ➔ Award Winning Renovations
- ➔ 3 New “Housing with Public Assets Redevelopments”
 - Chinatown
 - Uphams Corner
 - West End



BPL 2024 SNAPSHOT



2,332,152
in-person visits systemwide



TOTAL CIRCULATION

1,836,618

physical books



4,813,607

e-content

8,281

cards issued for
Books Unbanned

392
KBLIC 3D prints



View the facts and figures at
bpl.org/statistics

148,149

new library cards
issued



636,951
holds placed



9,635
KBLIC alcove
bookings



8,483
in-person visits to
Special Collections



26,000
rare book volumes cataloged



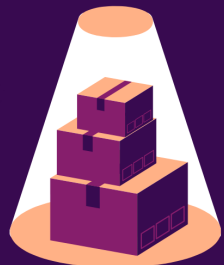
2,000+

ESOL classes,
conversation groups,
and workshops



1,627

rare, valuable, or
unique items added
to Special Collections



THE COMMONWEALTH REQUIRES THE
EDUCATION OF THE PEOPLE AS THE
SAFEGUARD OF ORDER AND LIBERTY

— *The Boston Public Library*
Boylston Street

BPL STRATEGIC PLAN

Our four key roles

Community Engager

Expanding the reach of the library beyond its physical walls so we can meet and engage communities where they are.

Life-long Learning and Research Partner

Empowering curiosity and a love of reading, discovery, and scholarly exploration for all.



Welcoming Destination

Creating active, inclusive third spaces where every person can chart their own path.

Trusted Resource

Connecting all people to reliable information and services that meet their needs and enrich their lives.

STATE OF BPL BRANCH SYSTEM

- ➔ 25 branches in system
- ➔ 13 Renovations since 2000
- ➔ 10 Remaining In Need of Renovation

- ➔ Fields Corner: Site too tight
- ➔ Egleston Square: Community Push Back
- ➔ Codman Square: Direction Pending
- ➔ SE & NE not viable
- ➔ Three Projects Moving forward
- ➔ Others TBD

CHALLENGES

- ➔ Boston's population is continuing to grow
- ➔ Boston does not have sufficient housing stock
- ➔ Boston does not have sufficient affordable housing
- ➔ Boston has a homelessness and housing instability problem
- ➔ Boston is a densely built-up city, on the water.

TIMELINE

- ➔ Review of all city owned lots and property
- ➔ Creation of the 'Housing with Public Assets' Concept
- ➔ City Analysis – Feb 2018 – Public RFI Process,
- ➔ Community Concerns: Parking, Open Spaces
- ➔ 3 Branch Library Projects are the first to move forward

BOSTON'S CHINATOWN

- ➔ Deep Neighborhood History
- ➔ First Permanent branch since 1950s
- ➔ The redevelopment by ACDC will create a 12-story building with 66 affordable rental apartments and 44 affordable homeownership units
- ➔ Groundbreaking Sept 2025

- ➔ <https://www.bpl.org/chinatown-project/>



BOSTON'S WEST END

- ➔ In 2024, the development team of Preservation of Affordable Housing (POAH) and Caste Capital to redevelop the West End branch of the Boston Public Library on Cambridge Street, the exsitign site
- ➔ The redevelopment will include a new two-story branch library and 119 income-restricted units of housing above the library.



BOSTON'S UPHAMS CORNER

- ➔ A five-story mixed-use structure with the bottom two floors occupied by the Boston Public Library and the upper three floors containing 33 workforce residential homeownership units.



NOTES

- ➔ Procurement Law Exemptions
- ➔ Preference: retain property ownership, issue long term ground lease;
- ➔ Library Condo within the Development
- ➔ Separate Architect for the Library Project, Managed by City's Public Facilities Dept.
- ➔ Follow Regular Process: Programming Study, Design, Construction
- ➔ Housing building standards and library Building Standards are different
- ➔ Deep complexity
- ➔ Community engagement challenges

RESOURCES

➔ City of Boston: Housing:

- <https://www.boston.gov/departments/library/housing-public-assets>

➔ BPL Branch Landing Page (direct link):

- <https://bpl.bibliocommons.com/v2/locations>