

Better Health through Better Homes

in the Potomac Health
Foundation Service Area



HousingForward
VIRGINIA



Potomac Health
Foundation

Potomac Health Foundation



Susie Lee

Executive Director



Erin Matthews Thomas

Senior Program Officer

OUR MISSION

To improve the health of the community by increasing access to health care for the medically underserved.

OUR VALUES

- Equitable access
- Catalyst for ideas
- Lived experiences



Project Team



Bob Adams

Executive Director



Jonathan Knopf

Senior Research Associate



Eric Mai

Research Associate



Whitney Brown

VCU Wilder Fellow

OUR BOARD

Virginia Housing

Department of Housing and
Community Development

REALTORS

Local governments

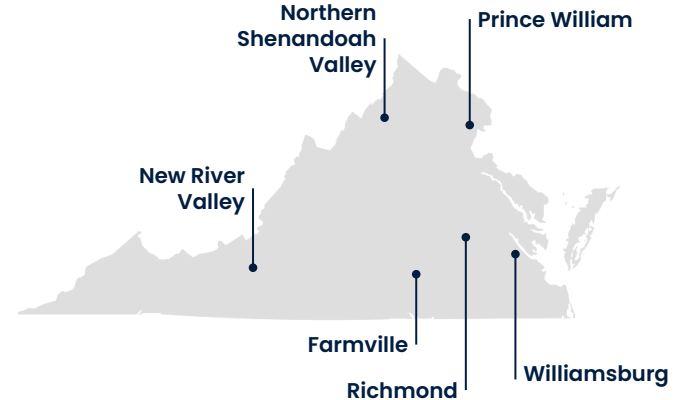
Nonprofit housing organizations

Fair housing organizations

Banks and lenders

Other stakeholders

OUR RECENT WORK



What's this project all about?

We keep learning more about the connection between housing and health, but there's more work to be done all over. **PHF has asked HFV to investigate this connection and help generate real solutions to address needs.**

PART 1

Research existing conditions using data on housing conditions, housing affordability, community quality, and health outcomes.

PART 2

Get residents and community members involved to tell us more.

We are here!

PART 3

Finish research and develop set of policy priorities to begin conversations about solutions.

PART 4

Work with community representatives and subject experts to build a specific pilot initiative for the region.

Who else is in the room?



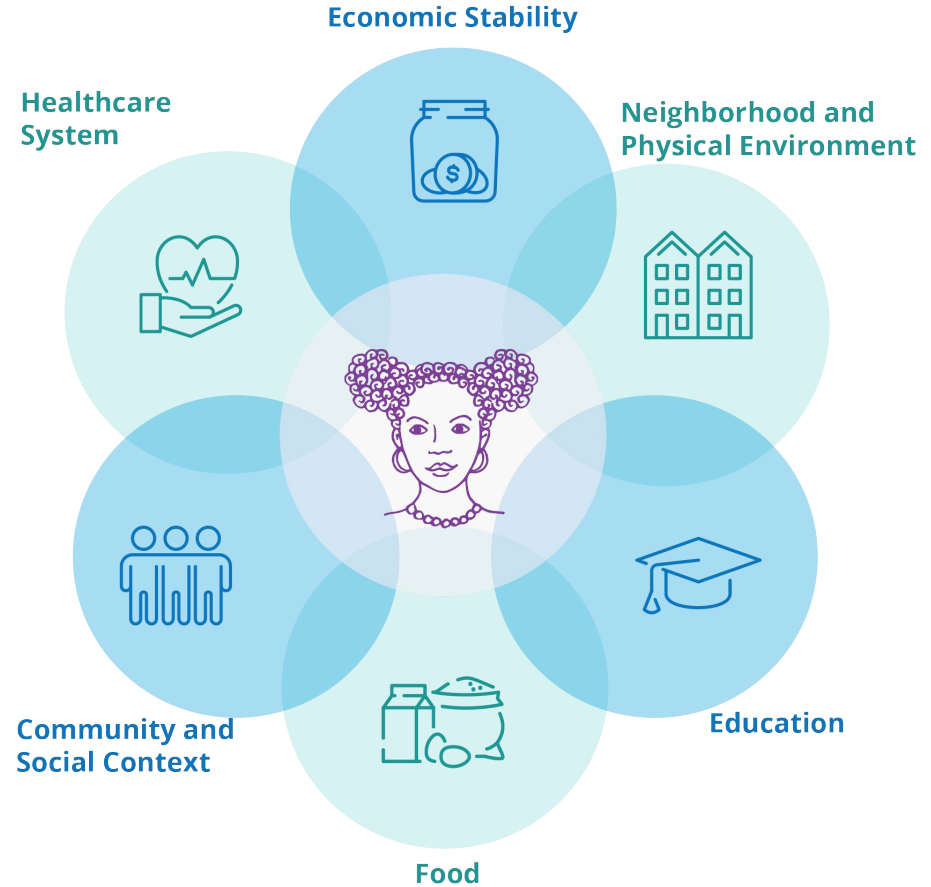
What are the Social Determinants of Health?



Social Determinants of Health (SDOH)

The multiple connected conditions that impact our overall health and well-being.

Housing is a single factor among many that is critical to our health.





Quality

Stability

Affordability

Location

**Aspects of
a healthy
home**

The questions we asked :

Who are the residents?

What are the housing conditions?

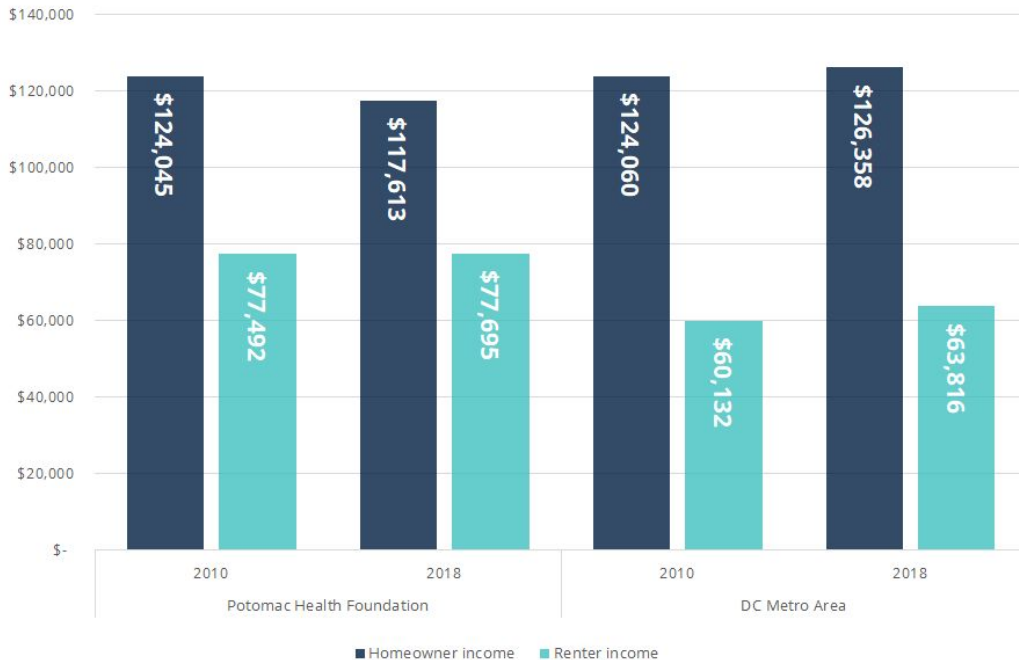
What are the community conditions?

What are the health outcomes?

Service Area Residents

- Largely young, but steadily growing older and more diverse.
- One in four residents is foreign-born with nearly 6% of households having limited English language proficiency.
- Incomes have changed little since 2010.

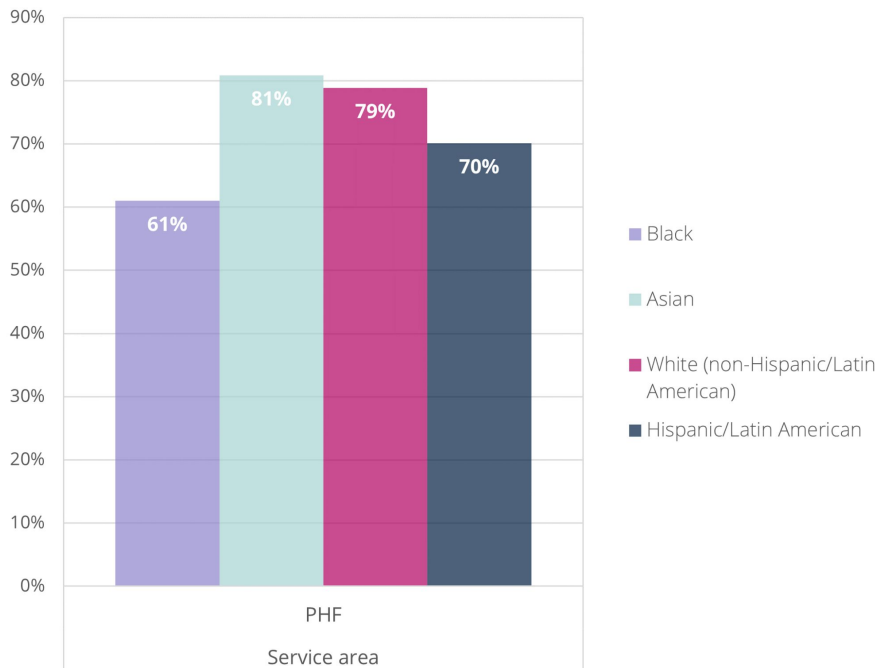
Tenure and Income in the Service Area and D.C. Metro Area



Housing conditions

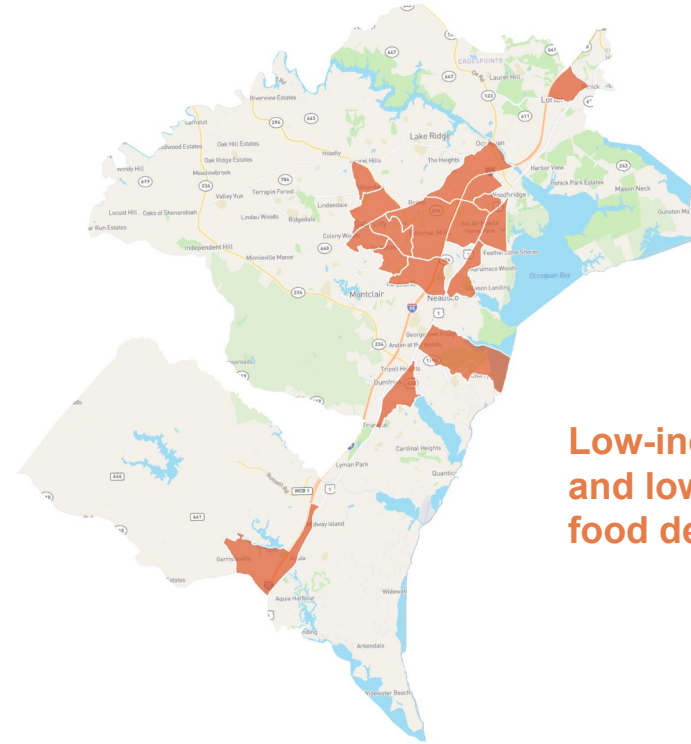
- The homeownership gap for Black households is wide.
- Minorities, low-income households and renters spend more than 30% of their income on housing costs.
- For every person or family being assisted, there are **twice** as many low-income, cost-burdened renters not receiving housing assistance.

Homeownership Rates by Race and Ethnicity



Community conditions

- High commuting rates contribute to traffic congestion and air pollution.
- 31% of the population are located in a food desert.
- Majority of the area is hard to navigate without a personal vehicle.

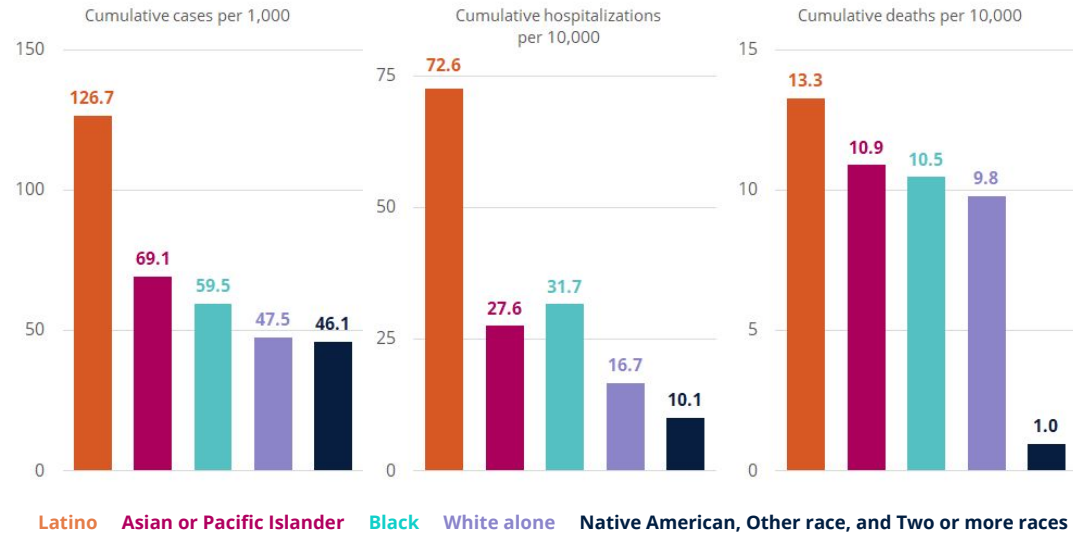


**Low-income
and low-access
food deserts.**

Health disparities

- The COVID-19 pandemic has shone a light on the vast differences in economic, financial, and health outcomes between persons of different backgrounds.

COVID-19 case rates, hospitalization rates, and death rates by race and ethnicity in Prince William Local Health District

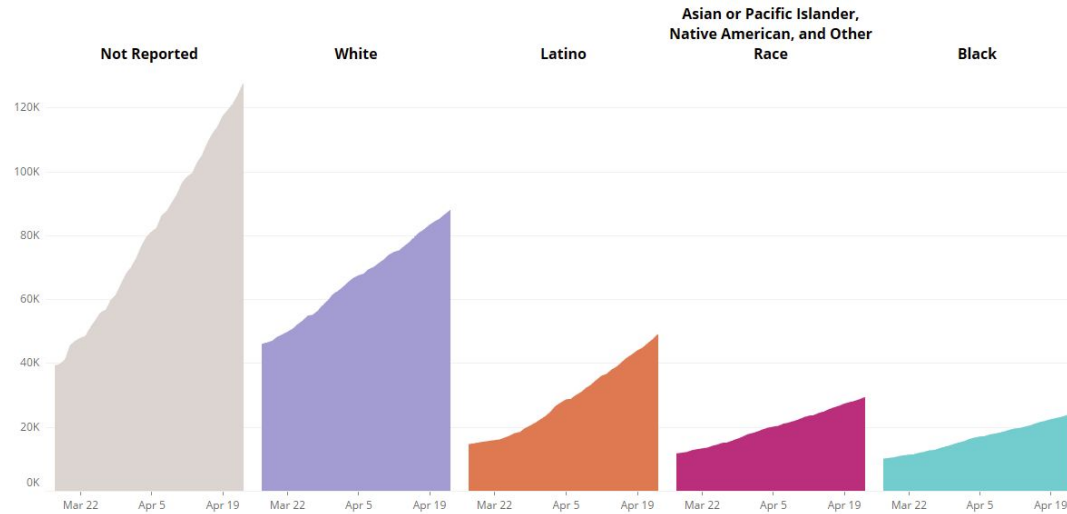


Source: Virginia Department of Health. Data cumulative through May 21, 2021.

Health disparities

- Despite incomplete data, the difference between white and non-white vaccination totals is clear.
- Without intentional planning, our solutions can reinforce and expand existing disparities.

Cumulative COVID-19 vaccine doses administered by race and ethnicity in Prince William Local Health District



Source: Virginia Department of Health

Notes: Race and ethnicity reporting for vaccine doses began March 17, 2021. Current through April 23, 2021.



Questions?



Proven Solutions

LISC Healthy Futures Fund

- Helps finance the development of Federally Qualified Health Centers with community-serving amenities (e.g. food markets, affordable housing, etc.)



The Conway Center in Washington, DC

East End Mobile Home Park

- Nonprofit ownership by Catholics for Housing provided residents with protection against eviction and improvements to community.



AHIP's Safe at Home Program

- The Albemarle Housing Improvement Program helps low-income households in the Charlottesville area make much needed home repairs and upgrades.



Join **AHIP** in keeping more neighbors **safe, secure, and healthy** at home.



City of Richmond's Lead-Safe Program

- A partnership between the City of Richmond, Richmond City Health District, and project:HOMES that seeks to address lead-based paint hazards in homes and apartments.



A photograph of two women sitting at a table in what appears to be a library or study area. They are both looking at a laptop screen. The woman on the left is wearing a blue denim jacket and a black headscarf. The woman on the right is wearing a dark top. The background shows bookshelves filled with books. The entire image has a teal color overlay.

Breakout Conversations

A photograph of two women sitting at a table, looking at a laptop screen. The woman on the left is wearing a black hijab and a denim jacket, pointing at the screen. The woman on the right is wearing a grey sweater and is also looking at the screen. The background shows bookshelves, suggesting a library or study environment. The image has a teal overlay.

**What surprised you about
the data presented?**

**What would you like more
information on?**



What are the features of a healthy home?

Quality

Stability

Affordability

Location

What's
most
important
to you?



Quality

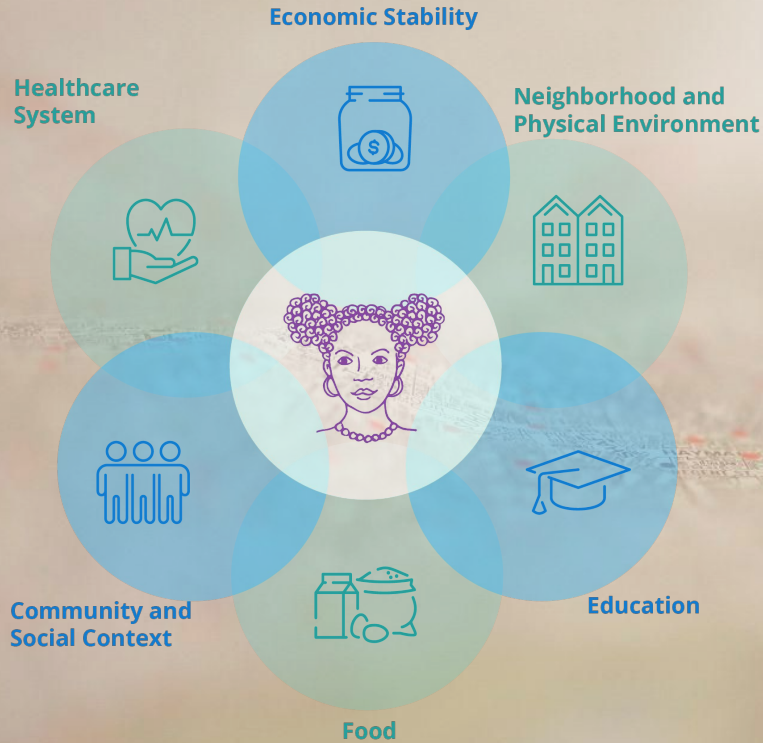
Stability

Affordability

Location

**What issues
should
housing and
health
practitioners
prioritize?**

Where can our housing and healthcare providers collaborate to improve health in your home, your neighborhood, your county?



Next Steps

